

**SECURING
OUR FUTURE**
ECONOMIC
MOBILITY

Building pathways for upward mobility



WELCOME

Life After Incarceration:

*Navigating the Challenges of Re-Entry
to Promote Economic Mobility*

**SECURING
OUR FUTURE**
ECONOMIC
MOBILITY SUMMIT
Building pathways for upward mobility





**SECURING
OUR FUTURE**
ECONOMIC
MOBILITY SUMMIT
Building pathways for upward mobility





**SECURING
OUR FUTURE**
ECONOMIC
MOBILITY SUMMIT
Building pathways for upward mobility





SECURING
OUR FUTURE
ECONOMIC
MOBILITY SUMMIT
Building pathways for upward mobility



Palm Beach County: Safety & Justice Challenge

- PBC has been part of the SJC since its inception in 2015
- PBC has participated in peer networking with several other sites
- PBC data dashboard has been cited as one of the best in the SJC network

Palm Beach County: Safety & Justice Challenge

- PBC has presented at the National SJC meetings on topics including:
 - How to reconstitute your local CJC
 - How to do meaningful and sustained community engagement
- PBC has also been recognized for its SJC funded strategy of its mobile probation bus by the National Association of Counties





[Tools For Counties](#) ▾

[Topics](#)

[Events](#) ▾

[About NACo](#) ▾

[Counties 101](#) ▾



[Home](#) / [COUNTIES 101](#) / [TELL YOUR COUNTY'S STORY](#) / [AWARDS PROGRAMS](#)

Palm Beach County Felony Mobile Probation Unit

2023 NACo Achievement Award Winner

Palm Beach County, Fla., FL



BRING
TURE
NOMIC
Y SUMMIT
for upward mobility



Who is in your jail?

- People with untreated trauma
- People with undiagnosed mental health issues
- People with years of untreated substance use disorder issues
- People with developmental disabilities
- People who never received the support and resources that many of us received



Who is in your jail?

- People with housing instability (40%)
- People with charged with non-violent crimes (75%)
- People with DUI/traffic offenses (10%)
- People booked into jail 2+ times per year (20%)
- People with technical violations from probation/parole (10%)

What is required of people leaving jail?

- Reporting to an office not close to where a person lives or works or at times that work for them
- Drug testing (and paying for it)
- Fines and fees that do not consider ability to pay
- Overprogramming people
- Threats of being jailed for technical reasons

Have you prepared for their release?

- Before discussing reentry, consider pre-entry planning
- Identify the needs of the people that will be entering your jail so that you can plan to provide the resources and support they need upon release





SECURING
OUR FUTURE
ECONOMIC
MOBILITY SUMMIT
Building pathways for upward mobility



What needs do they have?

- Housing
- Transportation
- Childcare
- Phones
- Job training/education
- Soft skills support (resumes/interviews etc.)
- Substance use disorder/Mental health treatment services

Have you prepared for their release?

- Are you creating obstacles to a successful reentry process?

OR

- Are you helping to remove barriers to a successful reentry process?

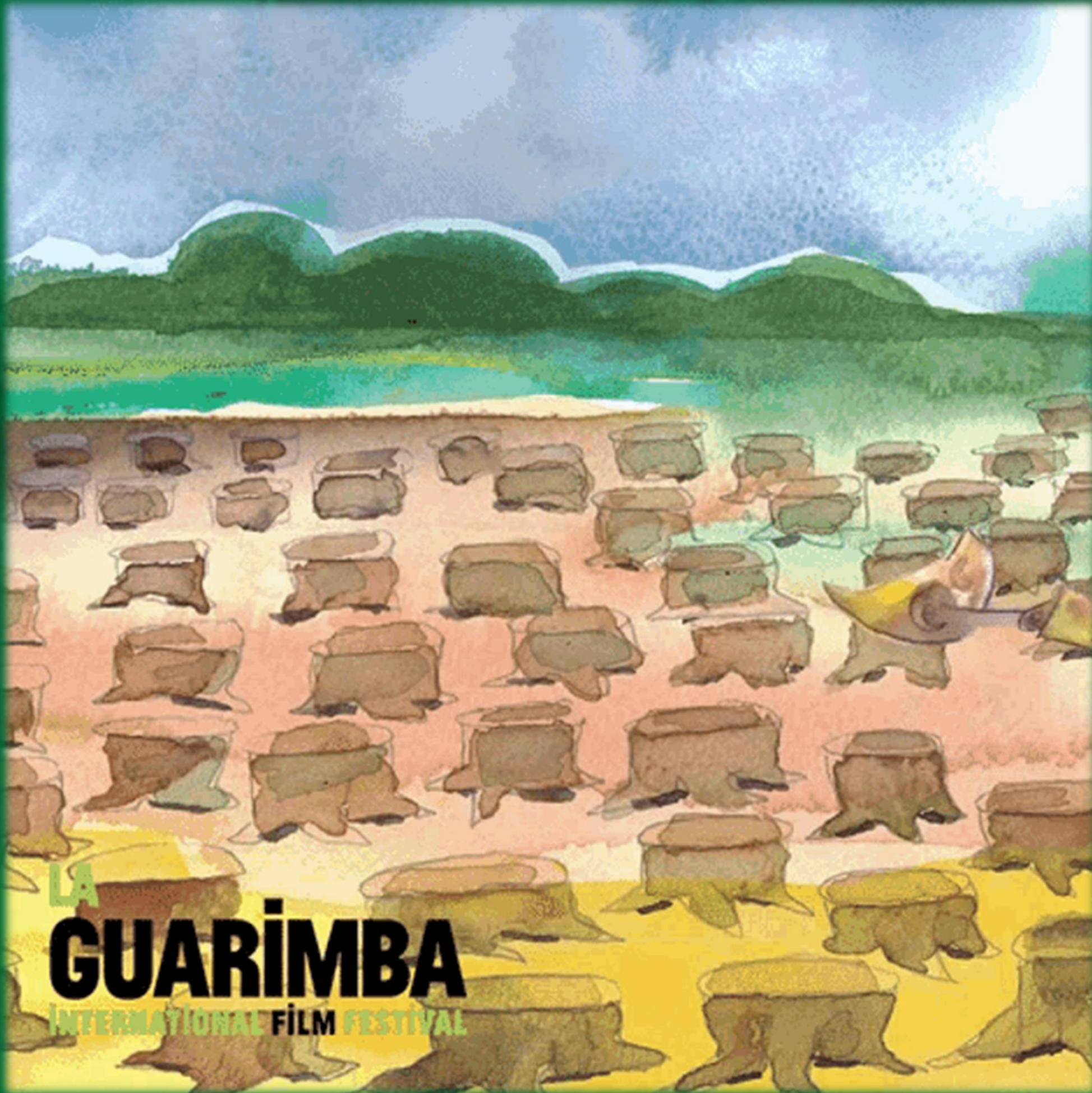






SECURING
OUR FUTURE
ECONOMIC
MOBILITY SUMMIT
Building pathways for upward mobility





LA
GUARIMBA
INTERNATIONAL FILM FESTIVAL

**SECURING
OUR FUTURE**
ECONOMIC
MOBILITY SUMMIT
Building pathways for upward mobility





SECURING
OUR FUTURE
ECONOMIC
MOBILITY SUMMIT
Building pathways for upward mobility



THANK YOU

Brett Taylor

Center for Justice Innovation

Senior Advisor, Community Justice

taylorb@innovatingjustice.org

646-489-4941

innovatingjustice.org



Safety & Justice



Life After Incarceration:
Navigating the Challenges of Reentry to Promote Economic Mobility

Ms. Freddie Menard, Esq.

Office of the State Attorney, Dave Aronberg

Sealing & Expungement

- **The Palm Beach County State Attorney's Office** offers a FREE Sealing and Expungement Workshop at least once a year where individuals with arrest records in Palm Beach County can receive help with applications to have a single criminal charge sealed or expunged from their records.
- Our office partners with the Police Department, the Clerk of the Circuit Court & Comptroller for Palm Beach County, and the Public Defender's Office to assist those who qualify in preparing a notarized application to the Florida Department of Law Enforcement, complete with fingerprints.
- **Sealed Criminal Record:** Unavailable to the public and not subject to public records request. Certain government or related entities still have access to the record in its entirety. Not destroyed.
- **Expunged Criminal Record:** Unavailable to both the public and government entities. Must be physically destroyed. Certain government and related agencies would still be notified that the record existed but was expunged.

Effect of Sealed and Expunged Records

- You may lawfully deny or fail to acknowledge the arrests EXCEPT when applying for a job with any criminal justice agency, district school board, school, local government agency that licenses childcare facilities; when applying for a job or license with certain government agencies; when seeking a license with the Division of Insurance; when applying to be a court appointed guardian; or if you are a defendant in a criminal prosecution, candidate for the Florida Bar, or applying for a subsequent expunction.

Sealing & Expungement

Eligibility Requirements for Sealing or Expunging Records

1. You have not been adjudicated guilty of any of the charges you are trying to seal or expunge.
2. You have not been adjudicated guilty of any other criminal offense or adjudicated a delinquent for committing a felony or certain misdemeanors, stemming from the same arrest.
3. You have not previously sealed or expunged a criminal record. One per lifetime.
 - *(Exception if you are requesting to expunge a record that required sealing for 10 years before expunction or if your prior case was a juvenile expunction).*
 - If you plead guilty or nolo contendere, or were found guilty, even if adjudication was withheld, of certain criminal charges you are ineligible for sealing or expunging your record.

Sealing & Expungement



JOSEPH ABRUZZO
CLERK OF THE CIRCUIT COURT & COMPTROLLER
PALM BEACH COUNTY

Self-Service Center
PO Box 4035
West Palm Beach, FL 33402
P: (561) 355-7048 | F: (561) 355-7082

Disqualifying Charges for Expunction/Sealing:

A request for a certificate of eligibility for an expunction or sealing of a criminal history record will be denied if the defendant was found guilty, pled guilty, or pled nolo contendere, even if the adjudication was withheld, on any of the following offenses:

Offenses listed in section 943.0584, Florida Statutes

1. Sexual Misconduct
2. Illegal Use of Explosives
3. Terrorism
4. Murder
5. Manslaughter or Homicide
6. Assault or Battery
7. Aggravated Assault
8. Felony Battery, Domestic Battery by Strangulation, or Aggravated Battery
9. Stalking or Aggravated Stalking
10. Luring or Enticing a Child
11. Human Trafficking
12. Kidnapping or False Imprisonment
13. Any offense defined in chapter 794
14. Procuring a Person Less Than 18 Years of Age for Prostitution
15. Lewd or Lascivious Offenses Committed Upon or in the Presence of Persons Less Than 16 Years of Age
16. Arson
17. Burglary of a Dwelling;
18. Voyeurism or Video Voyeurism
19. Robbery or Robbery by Sudden Snatching
20. Carjacking
21. Home-invasion Robbery
22. A violation of the Florida Communications Fraud Act
23. Abuse of an Elderly Person or Disabled Adult, or Aggravated Abuse of an Elderly Person or Disabled Adult
24. Lewd or Lascivious Offenses Committed Upon or in the Presence of an Elderly Person or Disabled Person
25. Child abuse or Aggravated Child Abuse
26. Sexual Performance by a Child
27. Any offense defined in chapter 839
28. Certain acts in connection with obscenity
29. Any offense defined in s. [847.0135](#)
30. Selling or Buying of Minors
31. Aircraft Piracy
32. Manufacturing a Controlled Substance
33. Drug Trafficking
34. Any violation specified as a predicate offense for registration as a sexual predator

“Our community becomes safer when those who are eligible under the law for sealing and expungement can get their lives back on track and become successful, law abiding members of our society.”

State Attorney Dave Aronberg

THANK YOU

Ms. Freddie Menard, Esq.

Assistant State Attorney

Felony DOVE, Conviction Review Unit & Hate Crimes Unit

Office of the State Attorney, Dave Aronberg

561-355-7100

**SECURING
OUR FUTURE**
ECONOMIC
MOBILITY SUMMIT
Building pathways for upward mobility

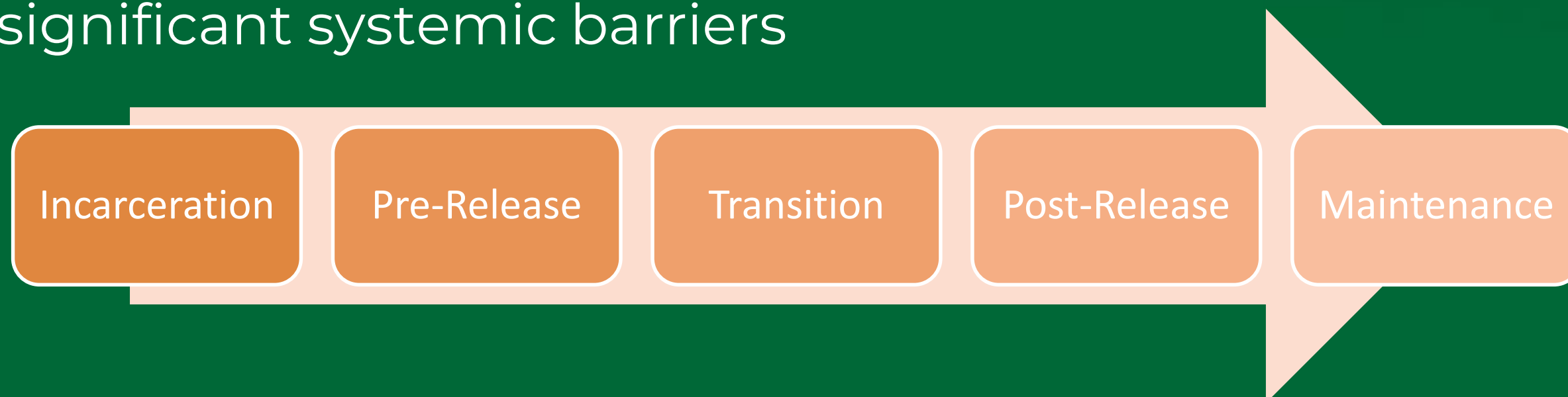


WELCOME

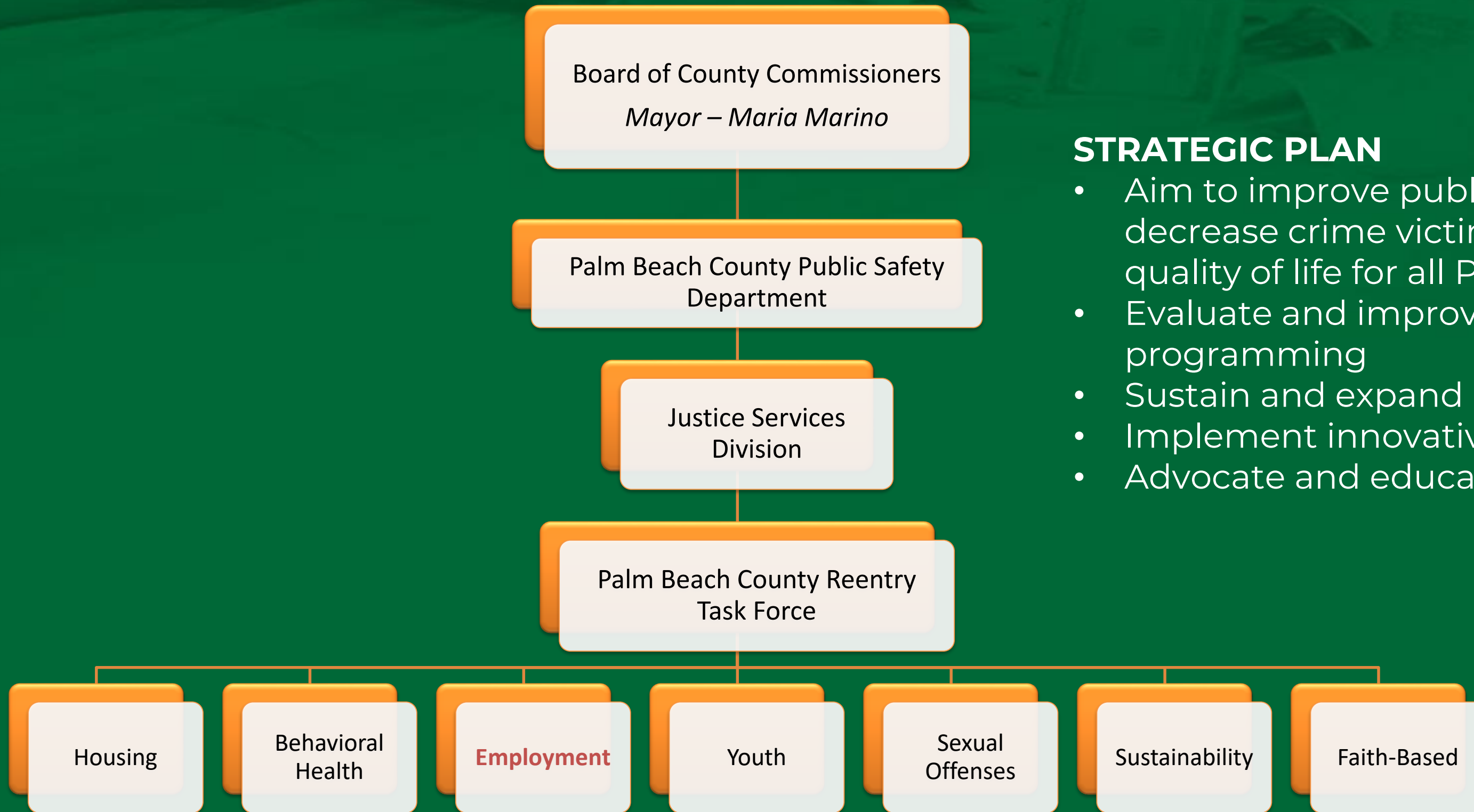
PALM BEACH COUNTY (PBC)

REENTRY DEFINED

- Reintegration of individuals transitioning back to the community after a period of incarceration
 - *Local jail, state prisons, federal prisons, youth residential commitment facilities*
- Voluntary programming; specially trained case managers develop individualized plans utilizing evidence based assessment tools to assist individuals in overcoming significant systemic barriers



PBC REENTRY TASK FORCE



STRATEGIC PLAN

- Aim to improve public safety, reduce recidivism, decrease crime victimization, and improve quality of life for all PBC residents
- Evaluate and improve existing reentry programming
- Sustain and expand ongoing reentry efforts
- Implement innovative practices
- Advocate and educate on critical reentry topics

PBC REENTRY TASK FORCE



VOTING MEMBERSHIP

- Florida Department of Corrections
- Palm Beach County Sheriff's Office
- League of Cities
- Returned Resident
- National Alliance of Mental Health
- Palm Beach County School District
- CareerSource PBC
- Department of Juvenile Justice
- Public Defender's Office
- State Attorney's Office
- Criminal Justice Commission Member
- Member of the Judiciary
- Member of Substance Use Community

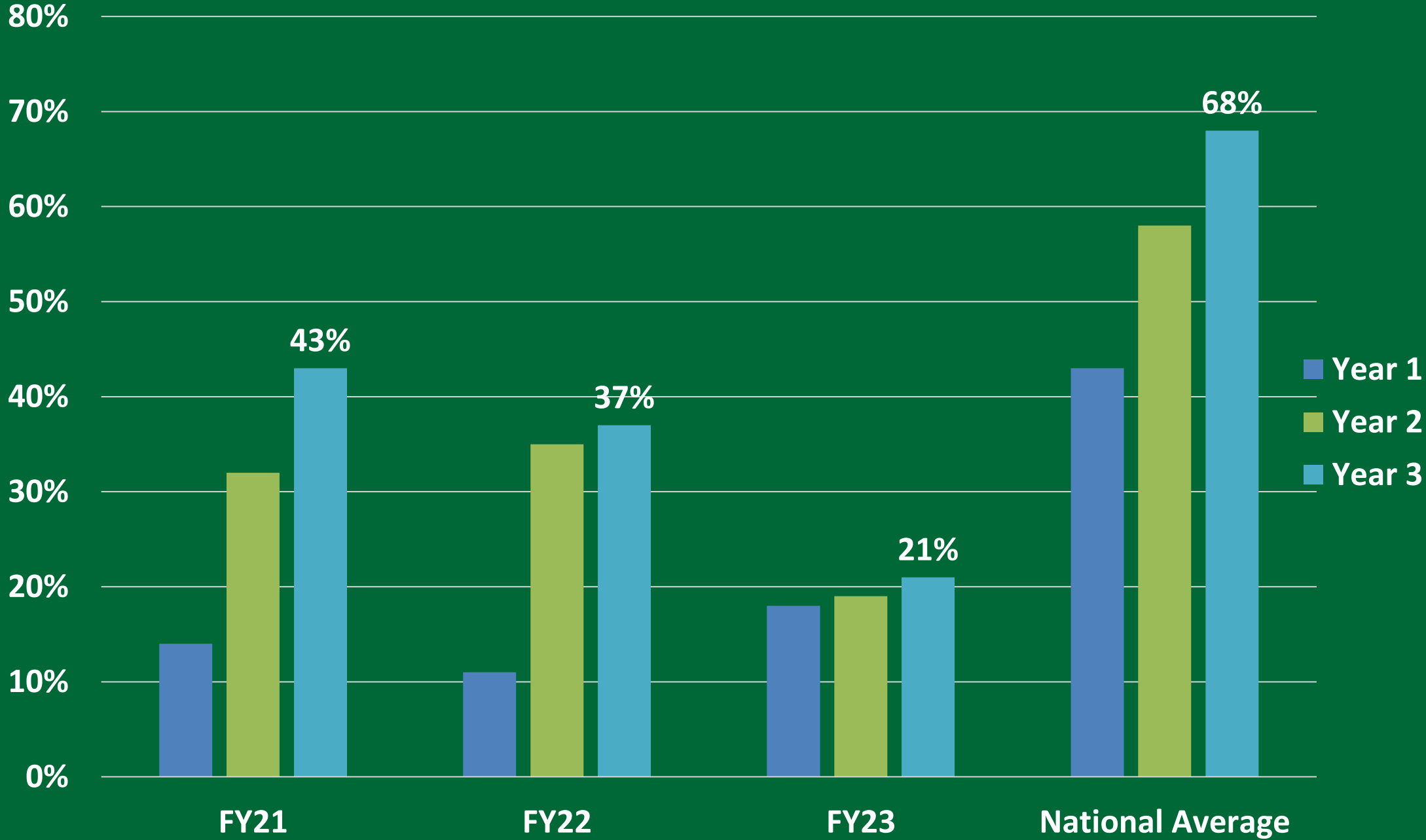
REENTRY INNOVATIONS

- Targeted economic support
 - *Transitional Housing/Utilities/Rental Assistance*
 - *Behavioral Health*
 - *Employment Attire/Tools*
 - *Vocational Training*
 - *Basic Needs*
- Transitional jobs coupled with cognitive behavioral interventions
- Community service/Restitution assistance
- Incentives
- Collaboration with community partners for access to additional services
- Linkages to community partners when ineligible for PBC reentry services

REENTRY OUTCOMES

PBC Recidivism Rate Compared Nationally

Recidivism (Re-arrests)



*The recidivism is measured by time between release and rearrest for clients enrolled in that FY.

**Not all participants have reached the 1, 2 and 3 year thresholds as of yet.



PBC REENTRY NETWORK (RENEW)

Currently tracking over 12,000 individuals in PBC

This information database includes the following elements:

- ✓ On-going Risk & Needs Assessments
- ✓ Responsivity
- ✓ Case Planning, Referrals and Follow-Up
- ✓ Documentation and Transfer of Records
- ✓ Staff Training and Quality Assurance
- ✓ Local rearrests
- ✓ **Employment Outcomes**



THANK YOU

Jessica Hidalgo

jhidalgo@pbc.gov

561-255-2326

**SECURING
OUR FUTURE**
ECONOMIC
MOBILITY SUMMIT
Building pathways for upward mobility

